

Operation allowed up to wind force 7 BF (14 m/sec).
The crane should be folded in at wind force 9 BF (21 m/sec)
or when not in use for a longer period
Counterweight crane: 8855 kg.
Max. outrigger force: 360 kN.

Make: SPIERINGS

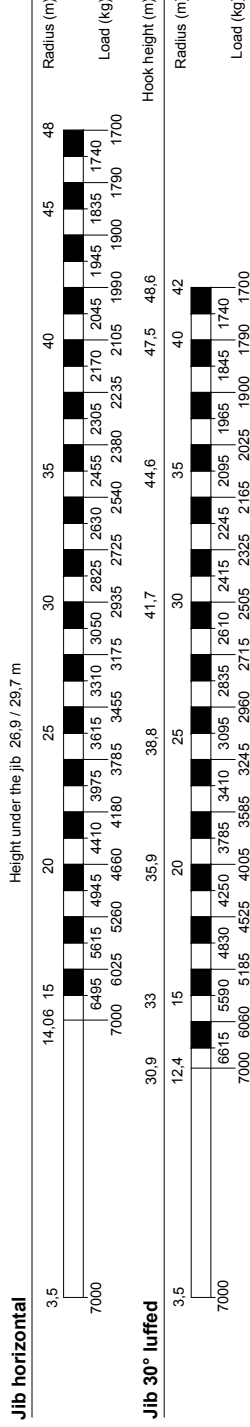
Type: SK597-AT4



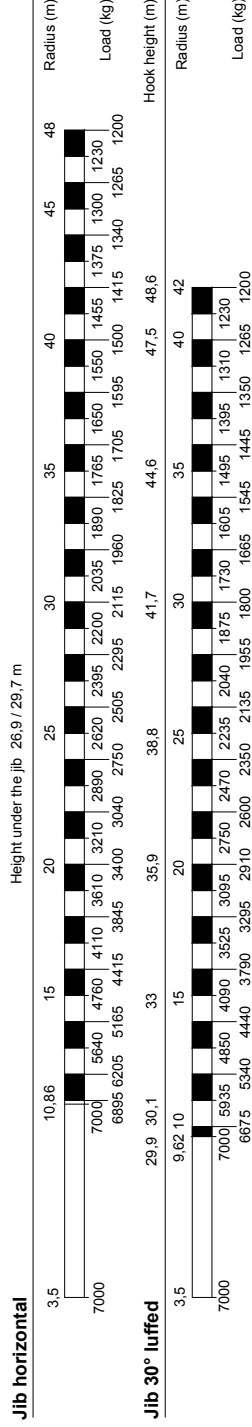
Serial number:

Year of construction: 2018

Lifting chart outrigger support base 6,925 m x 7,0 m



Lifting chart outrigger support base 6,925 m x 5,85 m



Specifications subject to modifications

84-00597101

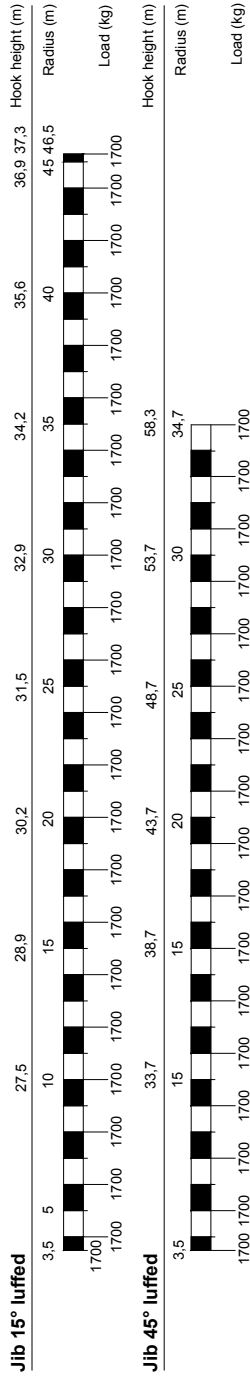


Make: SPIERINGS **Type: SK597-AT4**

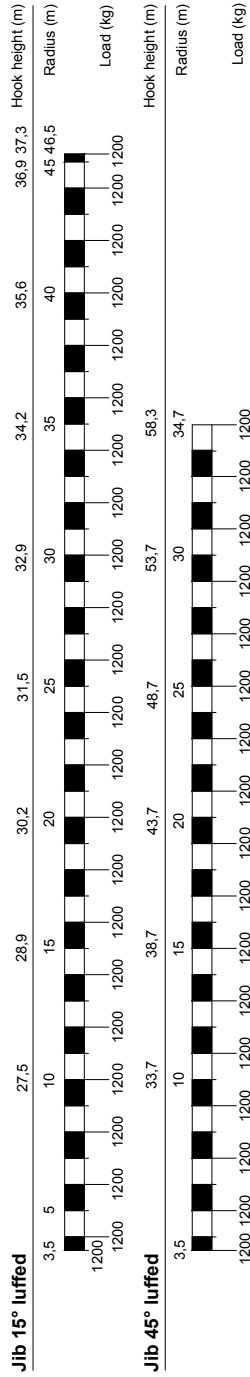
Serial number: **Year of construction: 2018**

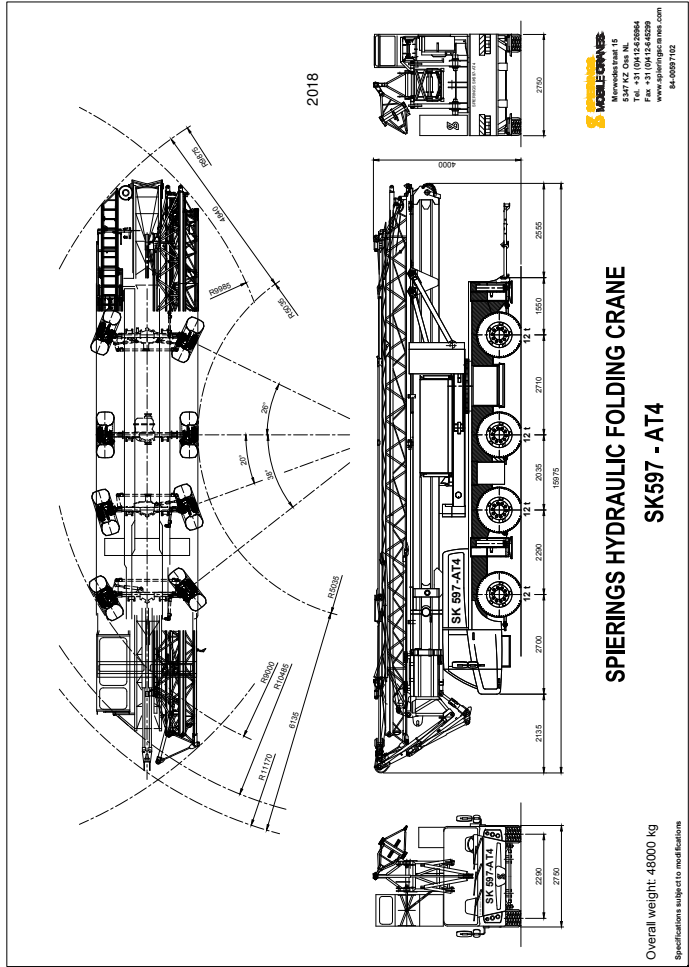
Operation allowed up to wind force: 7 BF (14 m/sec).
The crane should be folded in at wind force 9 BF (21 m/sec)
or when not in use for a longer period
Counterweight crane: 8855 kg.
Max. outrigger force: 360 kN.

Lifting chart outrigger support base 6,925 m x 7,0 m



Lifting chart outrigger support base 6,925 m x 5,85 m





SPIERINGS HYDRAULIC FOLDING CRANE SK 597 - AT4

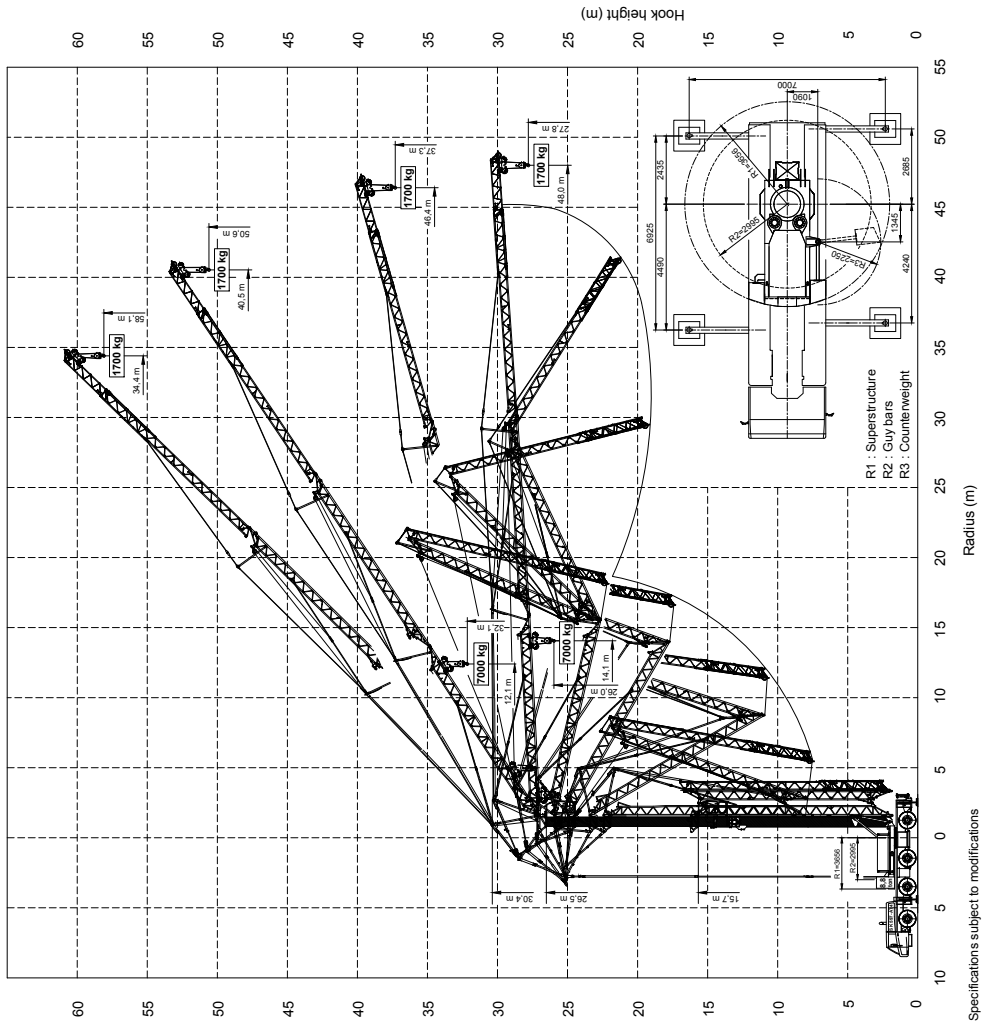
Erection procedure of the crane

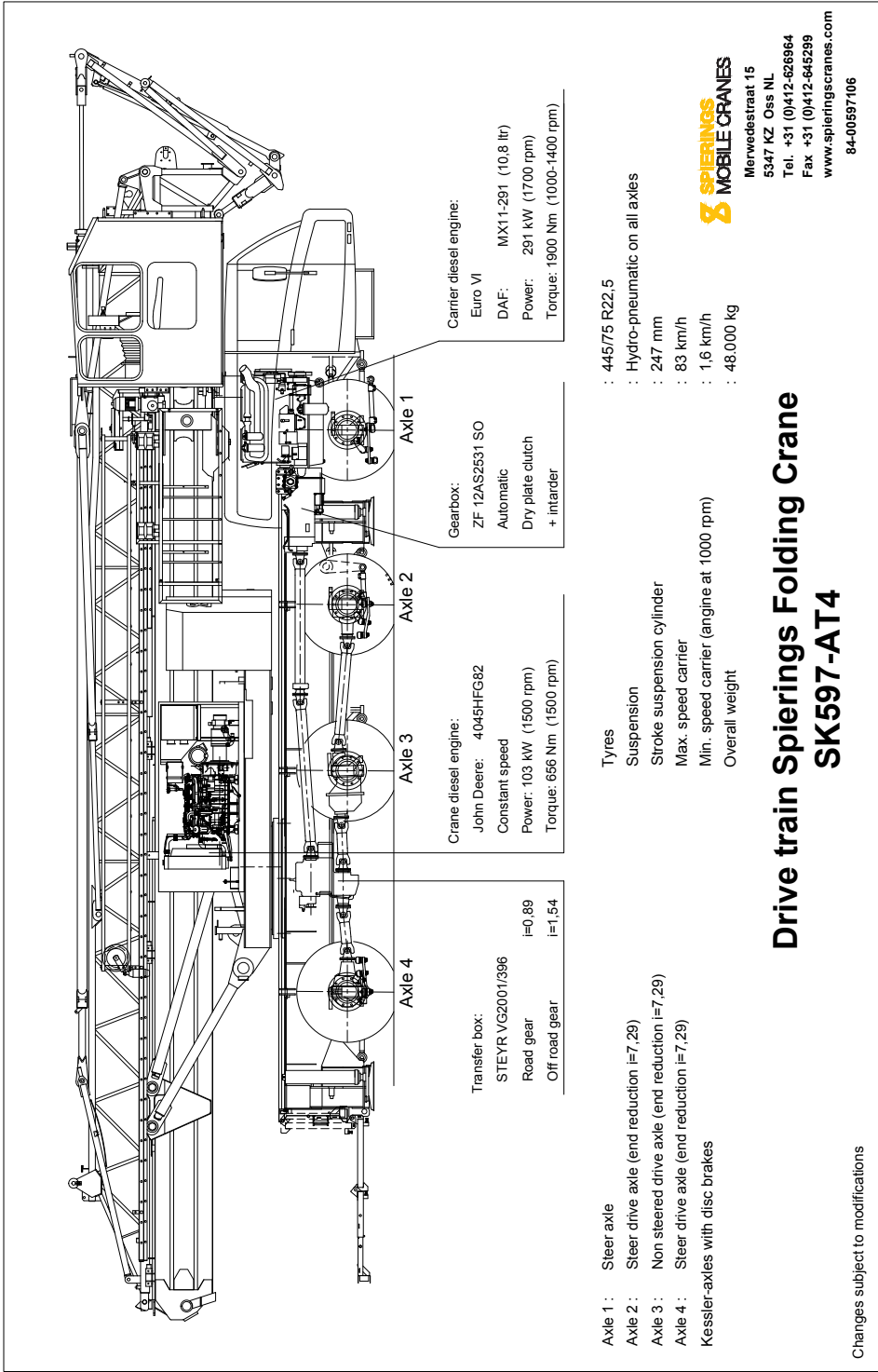
- Max. outrigger force : 360 kN
- Outrigger support pads : 750x600 mm
- Ground pressure : 0,80 N/mm²
- Jib can be unfolded through 360°
- Operating temperature range from -15°C till +40°C
- Luffing the jib 30° can be controlled from the crane cabin or remote control
- Outrigger support plates : 1100x1100 mm
- Surface : 1,21 m²
- Ground pressure : 0,30 N/mm²

2018



Merwedestraat 15
5347 KZ Oss NL
Tel. +31 (0)412-626964
Fax +31 (0)412-645299
www.spieringscranes.com
84-00597103





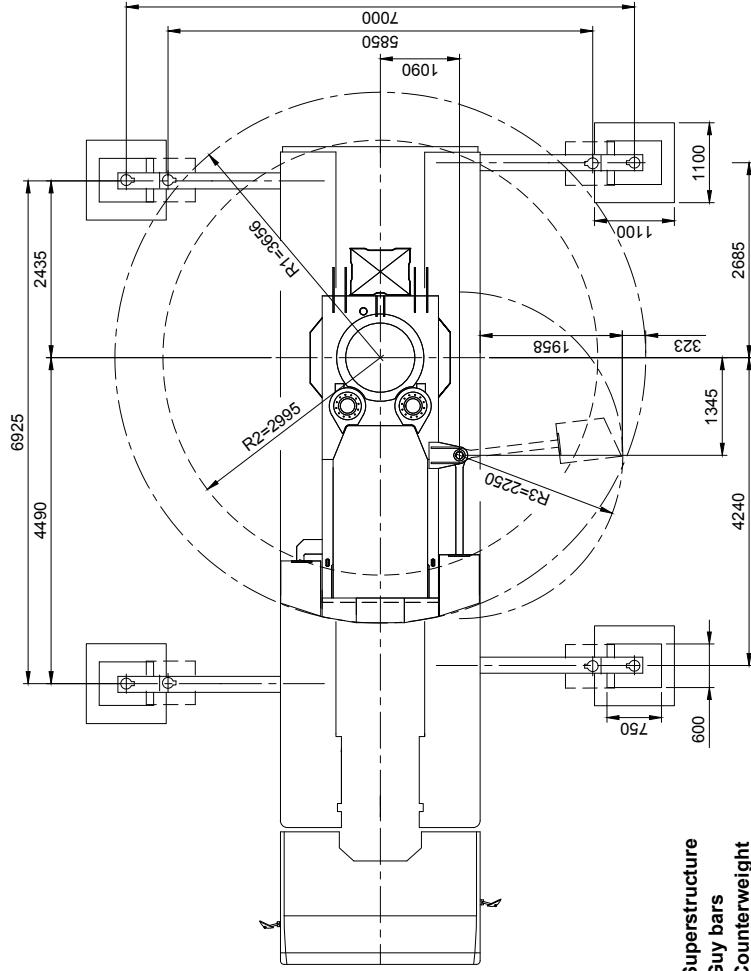
Drive train Spierings Folding Crane SK597-AT4

Changes subject to modifications

SPIERINGS
HYDRAULIC FOLDING CRANE
SK 597 - AT4

Outrigger support base	
Max. outrigger force	360 kN
Outrigger support pads	750x600 mm
Ground pressure	0,80 N/mm ²
Outrigger support plates	1100x1100 mm
Surface	1,21 m ²
Ground pressure	0,30 N/mm ²

2018



R1 : Superstructure
R2 : Guy bars
R3 : Counterweight

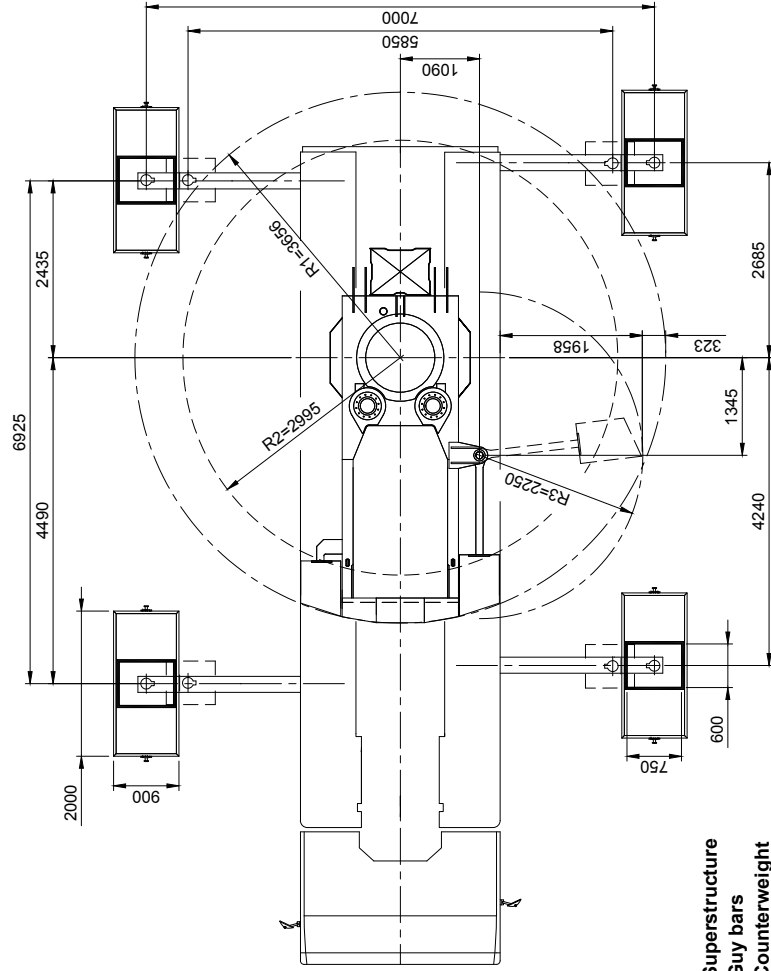
Specifications subject to change



Merwedestraat 15
 5347 KZ Oss NL
 Tel. +31 (0)412-626964
 Fax +31 (0)412-645299
 www.spleringcranes.com
 84-00597107

SPIERINGS
HYDRAULIC FOLDING CRANE
SK 597 - AT4

Outrigger support base	
Max. outrigger force	360 kN
Outrigger support pads	750x600 mm
Ground pressure	0,80 N/mm ²
Outrigger support plates	2000x900 mm
Surface	1,8 m ²
Ground pressure	0,20 N/mm ²



2018



Merwedestraat 15
 5347 KZ Oss NL
 Tel. +31 (0)412-626964
 Fax +31 (0)412-645299
 www.spierscranes.com
 84-00597107

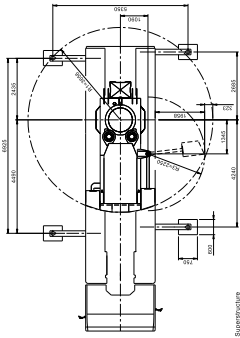
R1 : Superstructure
R2 : Guy bars
R3 : Counterweight

Specifications subject to change

SPIERINGS
HYDRAULIC FOLDING CRANE
SK 557 - A14

Overlapper support base
Diameter: 1000 mm
Weight: 1000 kg

2018



SPERINGS
Speringsmaats 14
Tel. 011 861 241444
Fax 011 861 241445
www.speringsmaats.com

Rij: Superintende
Rij: Opleiding
Speringsmaats 14