



Mark: **SPIERINGS** Type: **SK598-AT5**

**Crane identification**

Serial number:		Crane group : 3 as per NEN 2018	Identification-number	Max. load	Max. radius with max. load	Max. capacity	Max. jiblength
Year of construction:		Loadspectrum : 2 as per NEN 2018	92 tm	8,0 tonne	12,8 m	103 tm	48 m
		Classification : A as per NEN 2018					
		Stability : as per NEN 2022					

**Speeds**

Jib horizontal / jib 30° luffed	kg
	8000
	4000
	2000
	0
	m/min
	20
	30
	45
	75
	0 - 70 m/min
	0-0,8 rpm

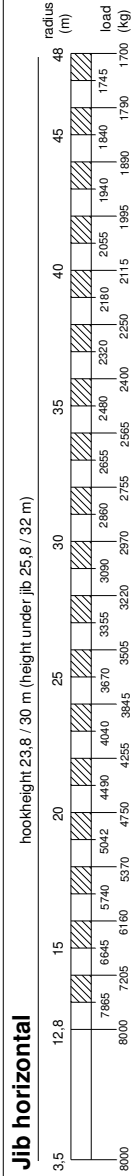
All motions with hydraulic proportional controls  
 Luffing the jib 30° can be controlled from crane cab or via remote control  
 Driving with erected tower and jib, only with the jib horizontal and positioned over the front carriage, platform locked to the carrier and the outriggers fully extended (max. inclination 2°)

Rated lifting capacity is net capacity  
 Crane equipped with full counterweight: 8700 kg  
 360° continuous slewing  
 Win outriggers out and down  
 2 Outriggers positions: 7,20 x 7,20 m  
 7,20 x 5,65 m

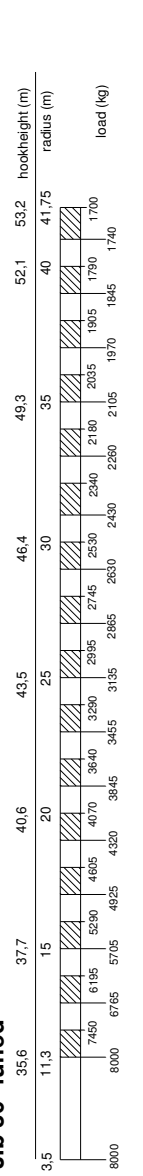
Operation allowed up to a windforce of 8 on the Beaufortscale. (wind speed 20 m/sec.)  
 Sail area of the load max. 1,0 m<sup>2</sup> / tonne at a windforce of 8 on the Beaufortscale.  
 Operating temperature range from -15° to 40° C.

In all cases 2 parts of line  
 Max. line pull force 4000 kg  
 The crane should be luffed in at a windforce >=10 (24m/sec) or when not in use for a longer period

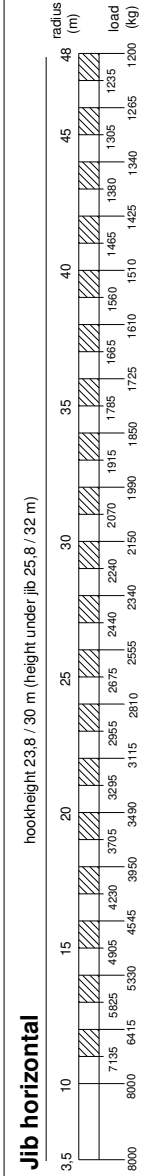
**LIFTING CHART Outrigger spread 7,20 m x 7,20 m**



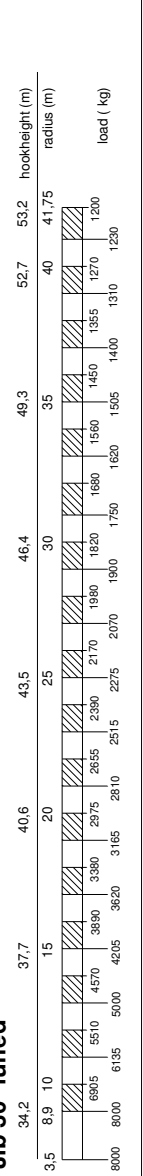
**Jib 30° luffed**

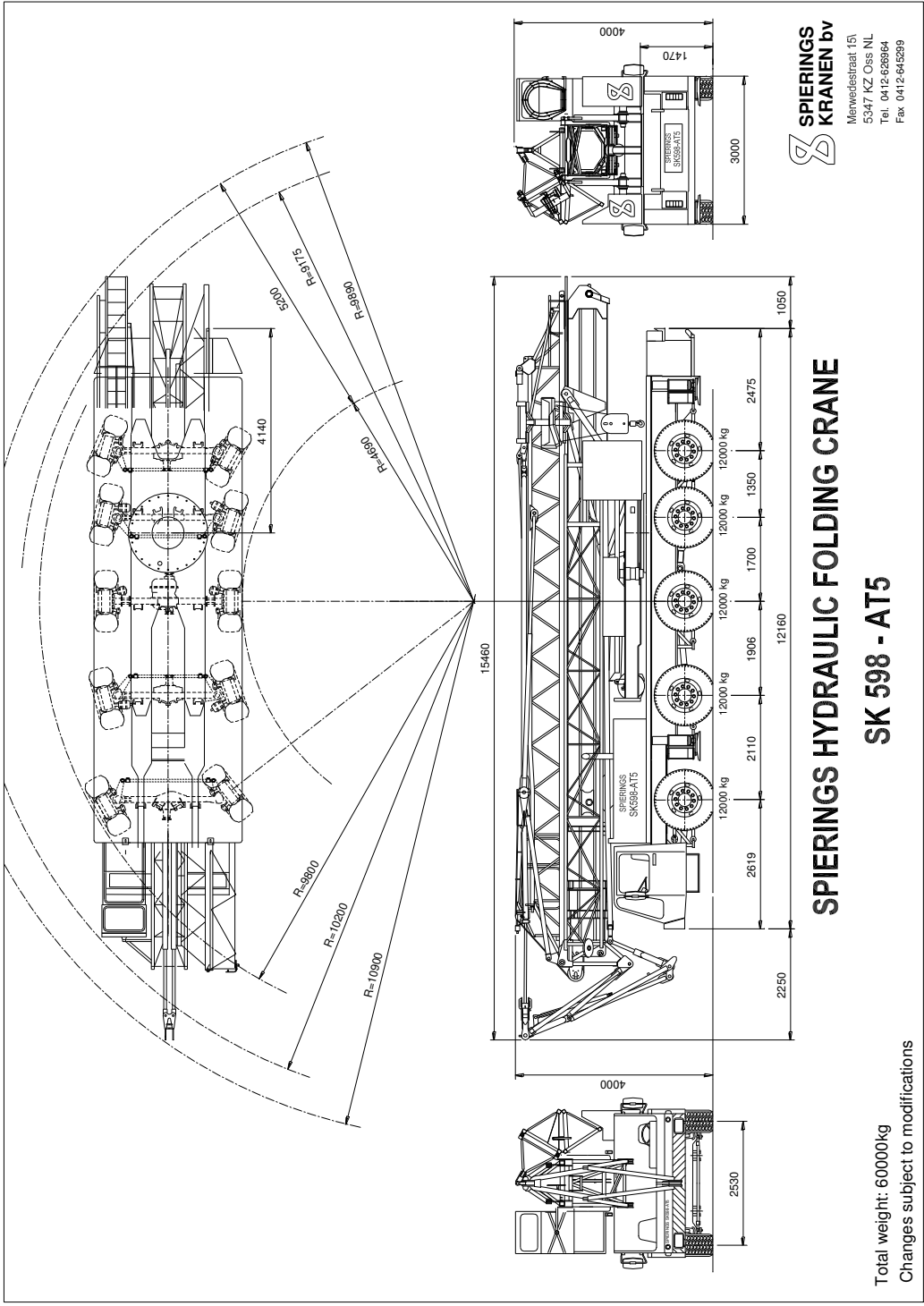


**LIFTING CHART Outrigger spread 7,20 m x 5,65 m**



**Jib 30° luffed**





**SPIERINGS**  
**KRANEN bv**  
 Merwedestraat 151  
 5347 KZ Oss NL  
 Tel. 0412-628964  
 Fax. 0412-645299

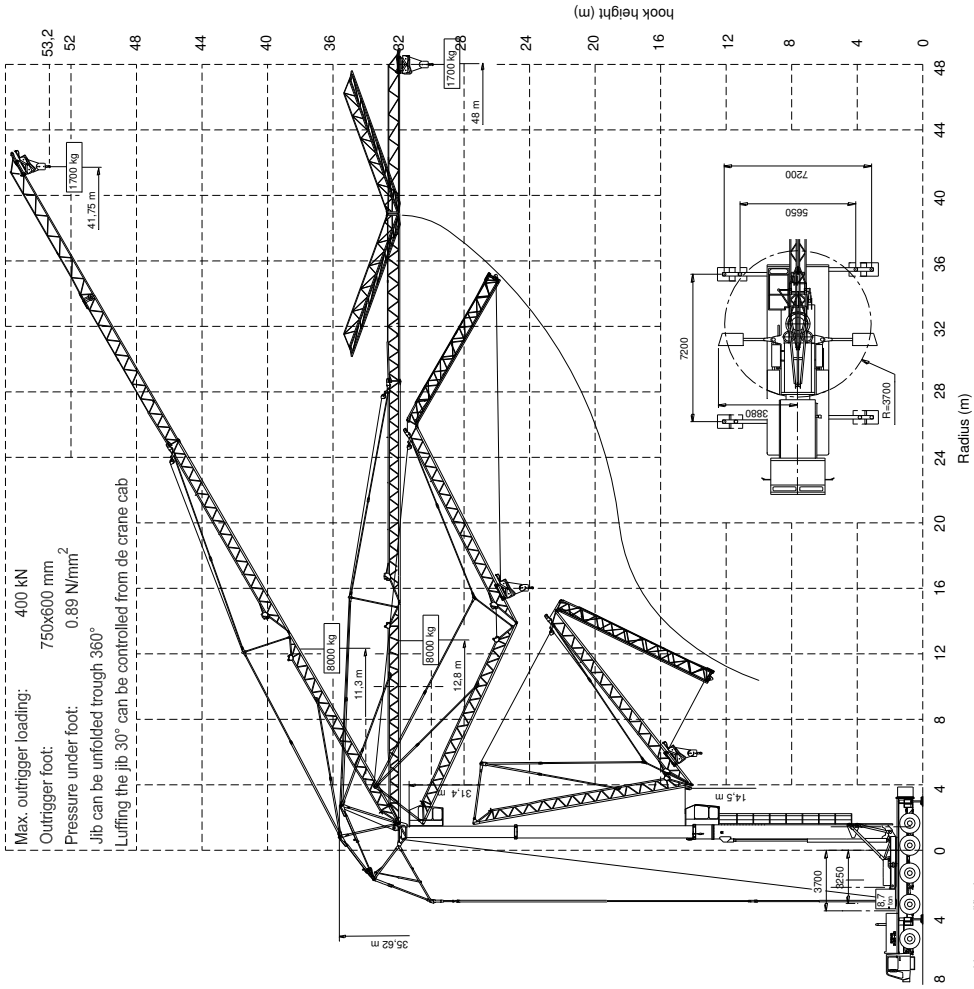
**SPIERINGS HYDRAULIC FOLDING CRANE**

**SK 598 - AT5**

Total weight: 60000kg  
 Changes subject to modifications

# SPIERINGS HYDRAULIC FOLDING CRANE SK 598 - AT5

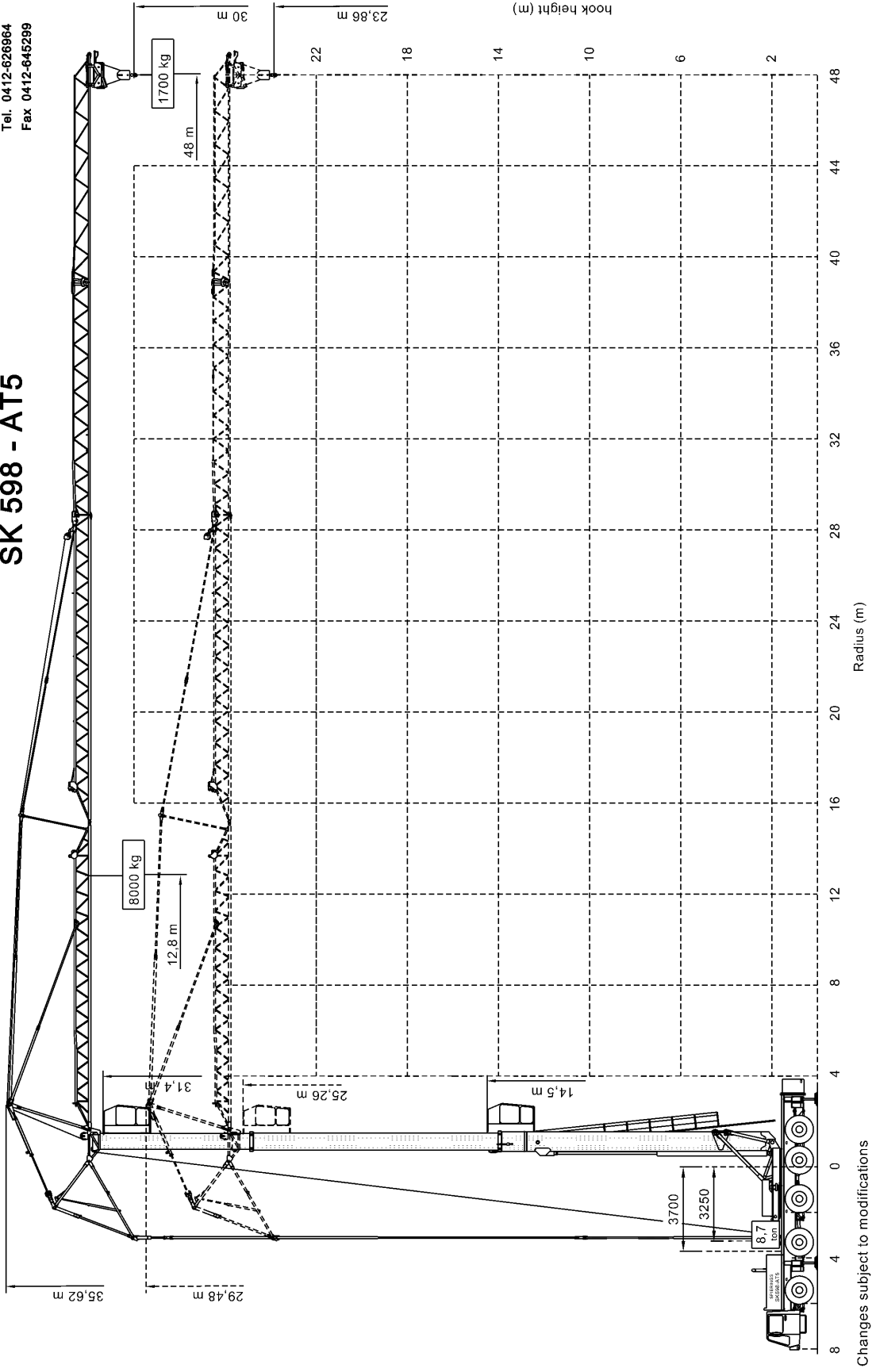
**SPIERINGS**  
KRANEN bv  
Merwedestraat 15  
5347 KZ Oss NL  
Tel. 0412-626964  
Fax 0412-645299



Changes subject to modifications

# SPIERINGS HYDRAULIC FOLDING CRANE SK 598 - AT5

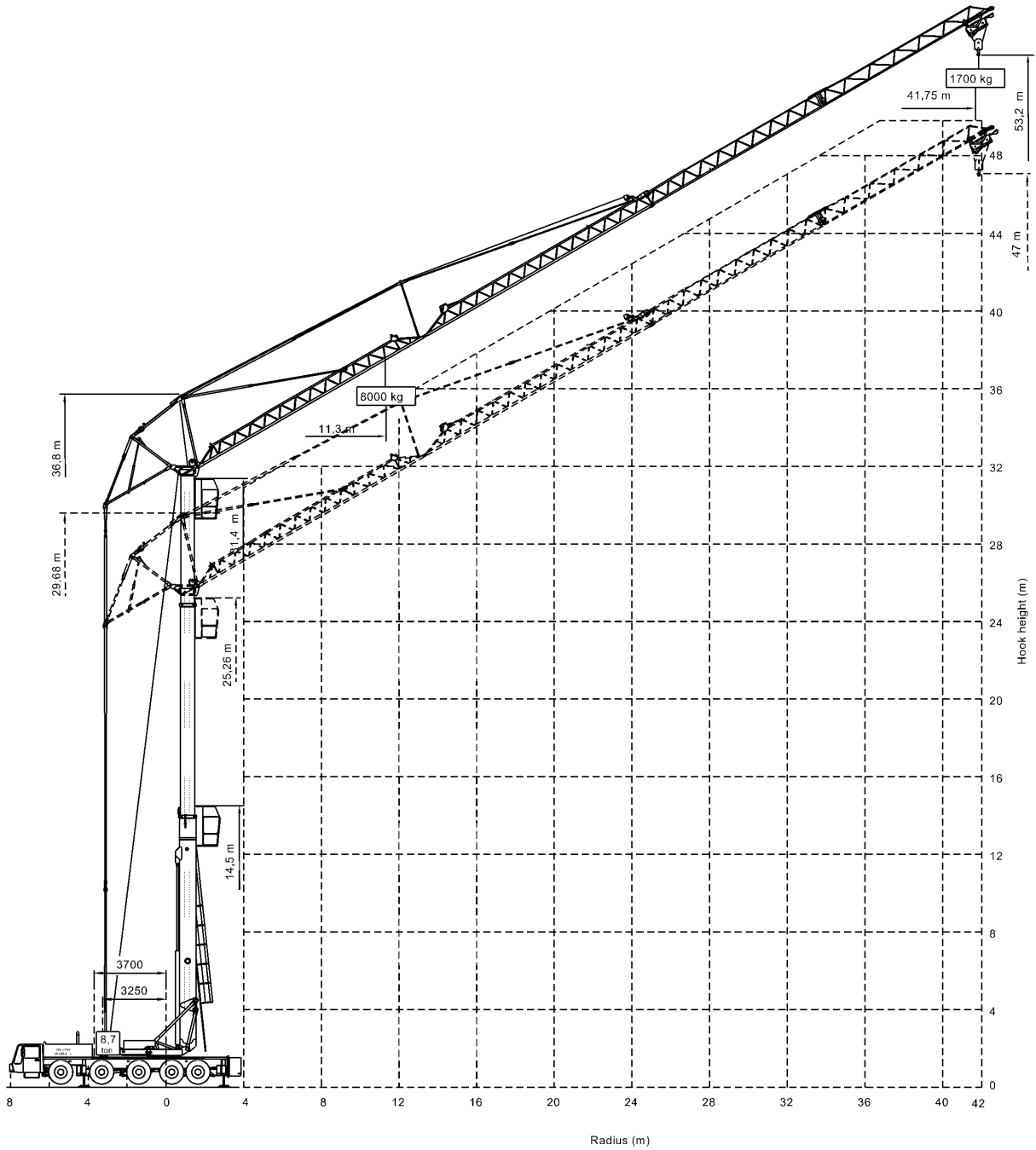

**SPIERINGS  
KRANEN bv**  
 Merwedestraat 15  
 5347 KZ Oss NL  
 Tel. 0412-626964  
 Fax 0412-645299



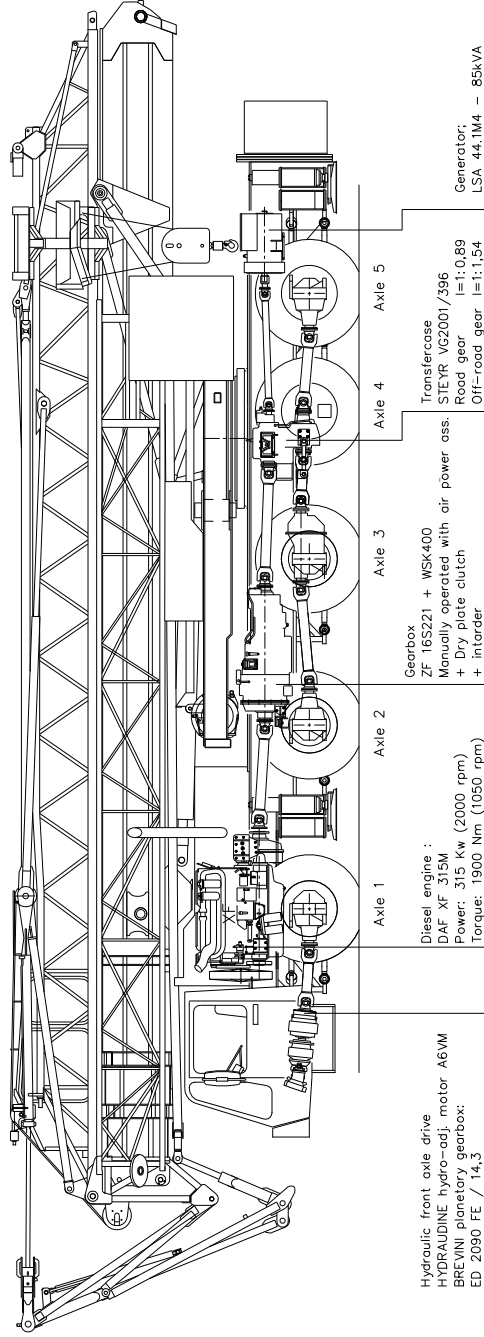
Changes subject to modifications

**SPIERINGS**  
**HYDRAULIC FOLDING CRANE**  
**SK 598 - AT5**

**SPIERINGS**  
**KRANEN bv**  
 Merwedestraat 15  
 5347 KZ Oss NL  
 Tel. 0412-626964  
 Fax 0412-645299



Drive train SPIERINGS SK598-AT5



Axes 1,2,3 and 5 : GINAF axles with DAF drive components


Axle 4 : GINAF axle, not driven

Suspension: Hydro-pneumatic on all axles, stroke ram 210 mm

Max. speed carrier : 80 km/h

Min. speed carrier (engine speed 1000 rpm) : 1,6 km/h

SPIERINGS HYDRAULIC FOLDING CRANE  
Typ SK598-AT5

 SPIERINGS  
KRANEN bv  
Merwedestraat 15  
5347 KZ Oss NL  
Tel. 0412-626964  
Fax 0412-645299

subject to modifications